

# JU VALGUS TÕSTAB TIIBU РАССВЕТ



Sõnad A. Haava  
Слова А. Хаава

Lento

*Har* *p* *mf*

*p*

Ju val\_gus tõs\_tab tii\_bu, öö  
Рас.свет рас.пра\_вил крылья над

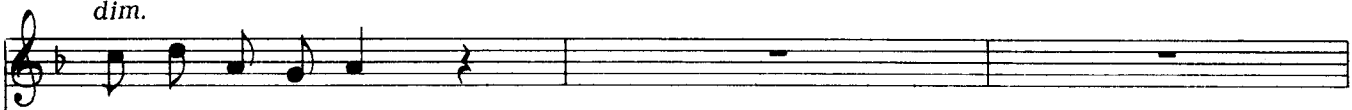
*f* *p* *p*

*cresc.* *mf*

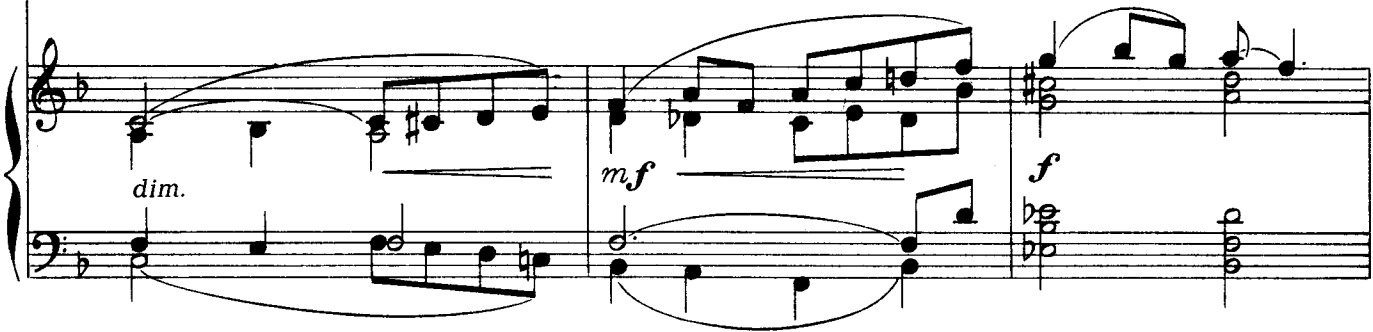
var\_jud lah\_ku\_vad, ja nur\_mel koi\_du\_ku\_mas kõik  
мо\_рем тем\_но\_ты и сол\_ныш\_ко встре\_ча\_ют у\_

*cresc.* *mf*

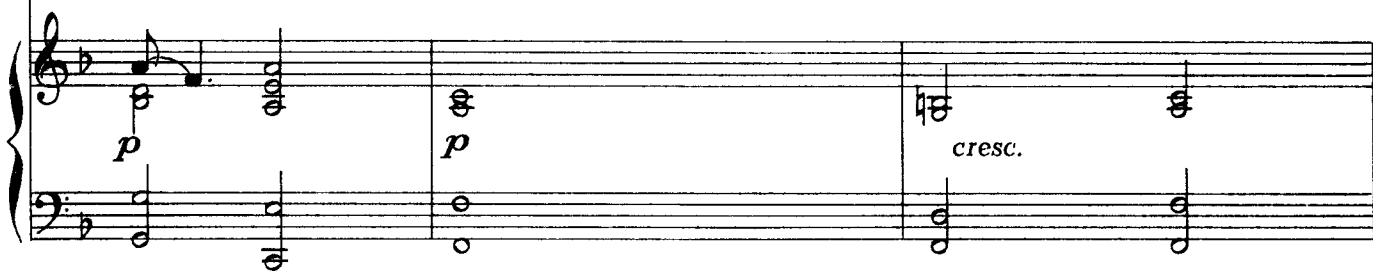
*dim.*



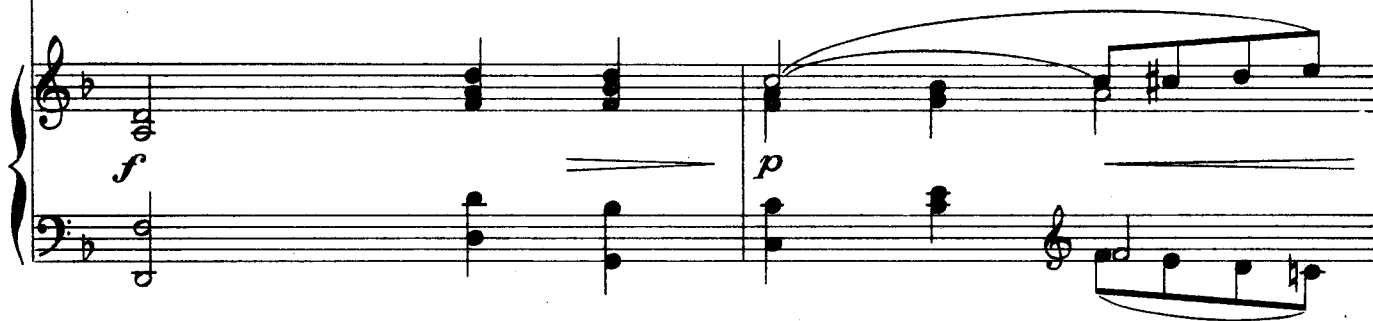
lil\_ led sä\_ ra\_ vad.  
лыб\_ ка\_ ми цве\_ ты.



Puu lad\_vus, met\_sa sa\_lus on kuul\_da lin\_nu häält — kui  
В зе\_ лё\_ ных кро\_ нах ро\_ щи, в рас\_ свет\_ ной ти\_ ши\_ не, стру\_

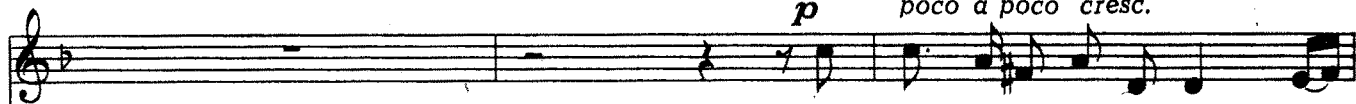


õn\_ nis u\_ ne\_ nä\_ gu laul kos\_ tab al\_ la säält.  
ят\_ ся пти\_ чьи пес\_ ни, как в чуд\_ ном свет\_ лом сне.



Più mosso

*p* poco a poco cresc.

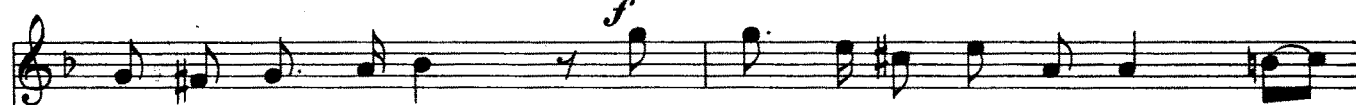


Üks roo\_si\_ni\_ru\_ke ne pää  
Бу\_тон\_чик ро\_зы сме\_ло во\_



*mf*

*p* poco a poco cresc



tõs\_tab erk\_salt siis: ta rõu\_e i\_gat\_su\_se on  
круг се\_бя гля\_дит и ра\_достью го\_ря\_чей е\_



ritard. molto



heit\_nud lau\_lu\_viis. Leht  
\_го на\_пев зву\_чит. Луч



Tempo I

*cresc.*

le \_ he jä \_ rel jär \_ jest tal puh \_ keb, a \_ va \_ neb — ja  
 сол \_ ныш \_ ка и \_ гра \_ ет на неж \_ ных ле \_ пест \_ ках, се \_

Piano accompaniment for the first system, showing chords and melodic lines in both hands. The right hand features a melodic line with some grace notes, while the left hand provides harmonic support with chords. Dynamics include *p* and *cresc.*

he \_ le, hiil \_ gav pi \_ sar ta sil \_ mis vä \_ ri \_ seb, ja  
 реб \_ ря \_ ны \_ е слё \_ зы дро \_ жат ве \_ го гла \_ зах, се \_

Piano accompaniment for the second system, featuring a prominent melodic line in the right hand. The left hand continues with harmonic accompaniment. Dynamics include *p* and *pp*.

he \_ le, hiil \_ gav pi \_ sar ta sil \_ mis vä \_ ri \_ seb.  
 реб \_ ря \_ ны \_ е слё \_ зы дро \_ жат ве \_ го гла \_ зах.

Piano accompaniment for the third system, showing a continuation of the melodic and harmonic themes. Dynamics include *p* and *pp*.

Piano accompaniment for the fourth system, concluding the piece with a decrescendo. Dynamics include *mf*, *p*, *rit.*, and *pp*.